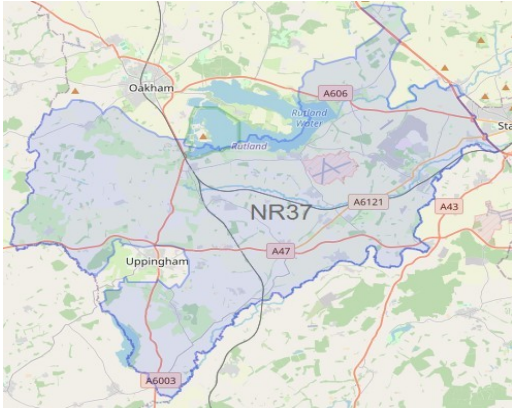




April 2026

Welcome to your Rutland Rural South police e-newsletter.



What matters to you

We have listened to you and the concerns that have been raised through surveys, community consultations, and ongoing crime pattern analysis. With this in mind we have made the following our priorities that our efforts will be focused on this quarter:

Road Safety: You said: Speeding vehicles on Rutland roads is a priority you want us to address across the county, but in particular the A47 corridor and it's tributaries.

What we are going to do: As before we will provide frequent overt policing to the affected areas with marked vehicle patrols, and through the use of handheld speed monitoring guns. We will also continue work with our partners in road safety in order to highlight areas of concern and request deployment of resources, and continue education and information about responsible use of the roads via our social media channels.

Rural Crime: You said: The issue of theft of agricultural equipment and other plant from commercial farming locations, equipment being used to commit other offences, and livestock offences and other wildlife crime has been highlighted as a priority you want us to work on.

What we are going to do: Continue our work with partners in Community Safety, alongside other colleagues in the Rural Policing Team to identify and target harden vulnerable locations and properties. Crime and intelligence led overt patrols of South Rutland along with robust policing of suspected offenders and persons of note. We will continue to promote proactive ways to keep property safe through our social media channels, and offer crime prevention advice through our consultations and engagements.

Theft: You said: The issue of theft, but particularly of and from vehicles has been highlighted as a priority you want us to work on.

What we are going to do: Patrols of affected areas in line with crime pattern analysis and local intelligence, along with robust policing of suspected offenders and associated people involved in wider associated criminality. Keeping property safe messages reinforced through our social media channels, and crime prevention advice and support offered through consultations and engagements.

What we have done #yousaidwedid

Hi South Rutland,

Another busy month on the beat. Lots of work going on with our partners tackling individual issues, supporting response policing with real time incidents, and the rare opportunity to Police Rutland at night, providing high visibility overt patrols in response to specific problems of theft of diesel and rural theft.

On Rutland South, we have been doing a lot of work on the A47 corridor, paying specific attention to the Seaton/South Luffenham crossroads. Safety at this junction in particular has been highlighted as an issue and we are monitoring traffic flow and also utilising our ANPR capabilities here to learn more about the problem.

Work is ongoing here, we are linked in with community safety at Rutland Council, and also Highways - Some solutions are in the pipeline. Watch this space!

The end of this month sees the 192nd Rutland County show, where once again we will be present as a local policing team. Please do come and seek us out if you are attending. It's a really positive event for our lovely little county.



April 2026

Neighbourhood Link

We continue to encourage local residents to have their say through Neighbourhood Link surveys, our aim is to keep all residents that have signed up to this aware of issues happening in Rutland.

Our policing priorities are set every quarter following returns of Neighbourhood Link surveys, along with crime pattern analysis data and issues highlighted by of our professional partners.

The more results we have from surveys, the better informed we are as to where to target resources.

Neighbourhood Link Community Messaging Service

Receive the latest news,
updates and events information
direct from the police



Leicestershire
Police
Neighbourhood Link



Benefits of signing up:

- ▶ Keep updated about police activity in your local area
- ▶ A trusted source of the latest crime reduction tips and advice
- ▶ Share your views and have your say through our surveys
- ▶ Choose to receive updates from partner organisations like Action Fraud

Remember:

- ▶ It's fast to register, and free to use
- ▶ It's a secure system. We'll never share your details without your consent
- ▶ You can unsubscribe at any time
- ▶ If you're already signed up, get local family and friends involved

Sign up at www.neighbourhoodlink.co.uk



April 2026

Noteworthy crimes

VEHICLE CRIME

Tickencote (A1) - Theft of diesel *Op Barric

BURGLARY

Ketton - Dwelling burglary

South Luffenham - Commercial burglary

THEFT

Nothing in this reporting period

Crime trends and Prevention advice

Crime is very low this month, with very few residential or personal property offences noted, but we do still have theft of fuel and commercial equipment from isolated areas across South Rutland.

There are relatively simple ways to make property less desirable to those who would seek to take it:

If you keep vehicles and trailers on commercial or rural sites, PLEASE try and park where they could not be reasonably or quickly removed. The more obstacles in the way, the less attractive your equipment is. It is a bind to do this every time you finish your working day, but we have seen the alternative and stolen equipment leads to lost days on sites/farms/infrastructure.

Give consideration to floodlights and particularly CCTV systems to deter criminality especially at large commercial concerns and building and renovation sites of which there are many in South Rutland currently- thieves don't like to be seen at work, anything that exposes or helps to identify them is worth the extra effort.

At home, always consider where your keys are kept in the house. Most criminals entering properties for keys will look in the obvious places in hallways and kitchens etc, so think about keeping your keys in the more ambiguous areas.

Rutland is an inherently safe county, but we *still* see instances of people leaving their cars unlocked, and in some cases the keys left inside. These are golden opportunities for thieves. Please lock your cars, no matter where you leave them, and for any amount of time.

Our villages whilst beautiful, are VERY dark at night so please remain vigilant. Ensure your doors and windows are always locked and leave lights on if you go out. Consider PIR floodlights for garage entrances and driveways where possible.

So many of our offences are avoidable if steps are taken to protect property and belongings.





Leicestershire
Police

Protecting our communities

Rutland South Newsletter

April 2026

Dates for your diary

BEAT ENGAGEMENTS:

Tuesday 05/05:

Barrowden Village Shop 10-11

Saturday 23/05:

Ketton Parish Council Office 10-11

Sunday 31/05:

Rutland County Show - All day



Follow us & Contact info

Follow us on Facebook - @RutlandPolice

Contact the team directly via email:

Email: PC 2157 Edd McKinnon:

Edward.mckinnon@leics.police.uk

Email: PCSO 6071 Elizabeth Wynn-Jones

Elizabeth.wynn-jones@leics.police.uk



The next edition will be out soon!