



Leicestershire  
**Police**  
Protecting our communities

# Rutland North Newsletter #yousaidwedid

Issue: Summer update August 2024 edition



Welcome to your new look monthly newsletter!  
Focusing on the priorities that you want your local policing team to deal with



Your Dedicated Neighbourhood Team (from left to right):  
PCSO 6557 Lauren Lyall, PS 4114 Liam Palmer, PC 1049 Jake Spruce

## What matters to you

We have listened to you and the concerns you have raised through surveys, community consultations and analysing crime trends. Using this data, we have created the following Rutland North priorities that the Dedicated Neighbourhood Team will focus their efforts on:

### Priority 1: Road Safety.

You said: Speeding vehicles on Rutland roads is a priority you want us to address, specifically the lack of adherence to 30mph zones.

What we are going to do: We will provide a frequent high visibility policing presence to the affected areas with marked vehicle patrols and regular monitoring. We will deploy the speed gun device and deal with offenders robustly where appropriate. We will also continue to work with partner agencies, such as the Road Safety Partnership mobile speed camera van, to identify areas of concern and request deployment of that resource. We will then continue to publish the enforcement statistics on the Neighbourhood Link messaging service.

### Priority 2: Vehicle Crime.

You Said: Vehicles being broken into, items being stolen and damage caused to vehicles is a concern to you.

What we are going to do: Develop our intelligence picture around those who commit this type of crime so we that we can effectively target our resources in the right areas, at the right time, with the aim of deterring, disrupting and bringing offenders to justice.

### Priority 3: Farm Equipment Thefts.

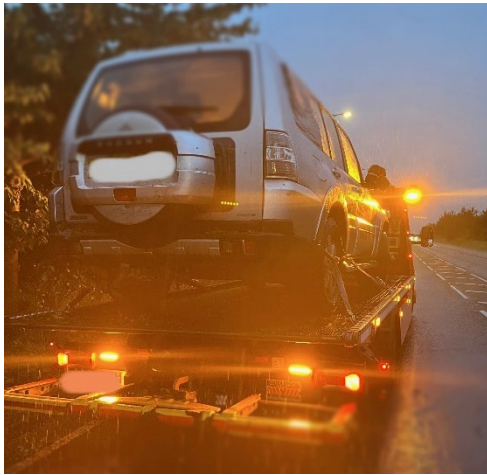
You said: Reports of criminals stealing plant equipment and machinery from farms and building sites is a concern for you.

What we are going to do: Working closely with the Rural Policing Team, proactively patrol at all times of day and night. Robustly deal with offenders. Visit victims of crime and provide target hardening advice. Make efforts to locate and reunite stolen equipment.

## What we have done #yousaidwedid

Over the past few weeks the beat team have dealt with numerous incidents, both in assisting our colleagues on response with emergencies, as well as tackling the priorities that you want us to deal with. Things of note to mention:

PC Spruce attended an emergency response of a male stealing from a garden centre. PC Spruce was first on scene single crewed, arrested the male who was then subsequently interviewed by General Duty Officers in custody, then charged with the offence and remanded to court. At court the male received an 18 week custodial sentence. A great example of team work between departments and a good result in keeping the public safe.



Officers have been out proactively patrolling and responding to incidents in relation to road safety. The proactive work completed over the last month has resulted in several vehicles being seized, drivers being dealt with and sent to court. We have dealt with a number of offences on the Rutland North beat, including no insurance and no MOT. Officers have also responded to road traffic collisions, as well as broken down vehicles and worked closely with partner emergency services for safe resolutions. Further to this, the beat team have been working closely with parish councils and the Road Safety Partnership for more speed enforcement in more areas on the Rutland North. The team are also currently working on a new operation to allow the deployment of officers from other areas and departments to proactively tackle the issue of road safety more regularly.

## Crime and Policing Report – 30 day crime report, 17/06/2024 to 17/07/2024

As per new direction from Leicestershire Police, the newsletters are all being standardised force wide. This means the beat team need to generate the content earlier than previously. Therefore, crime figures will stretch over two months, but still a 30 day period.

### VEHICLE CRIME

**GREAT CASTERTON** – Overnight the victim's vehicle has been broken into via the boot using a screwdriver. Tools stolen from within.

**BELMESTHORPE** – Overnight the victim's vehicle was broken into and a purse stolen.

**A1 GREAT NORTH ROAD** – Four separate HGVs parked in laybys over different nights have had their fuel tanks drained whilst the driver was asleep.

**LANGHAM** – Damage caused by way of a large scratch to the paintwork of vehicle whilst parked.

**HAMBLETON** – Theft from motor vehicle. Window smashed and bag taken from within.

### THEFT

**CASTERTON** – Suspect attempts to steal £2,700 worth of goods from Garden Centre. Suspect is detained, arrested and charged with the offence.

**MARKET OVERTON** – Large amount of loose dry-stone wall was taken from a church yard where it was being stored before it could be used to rebuild the wall.

**WHISSENDINE** – Bicycle stolen from rider. Later found abandoned and recovered.

**RUTLAND WATER** – Damage caused to the vehicle barrier after closing of the car park.

**GREETHAM** – Break into storage container.

**EXTON** – Burglary overnight to Rutland Falconry and Owl Centre, tools and items stolen.

## Crime Trends and Prevention Advice

### Preventing Theft from a Vehicle

See full details on the link here - [Prevent theft from a vehicle](#) | [Crime Prevention](#) | [Leicestershire Police \(leics.police.uk\)](#)

## Community engagements – Come along and meet the team!

### Don't miss out on our upcoming events:

Cottesmore Village Hall, Beat Engagement Coffee Morning – Wednesday 7<sup>th</sup> August – 10:00 to 11:00

Burley Road Co-op, Beat Engagement – Sunday 18<sup>th</sup> August – 10:00 to 11:00